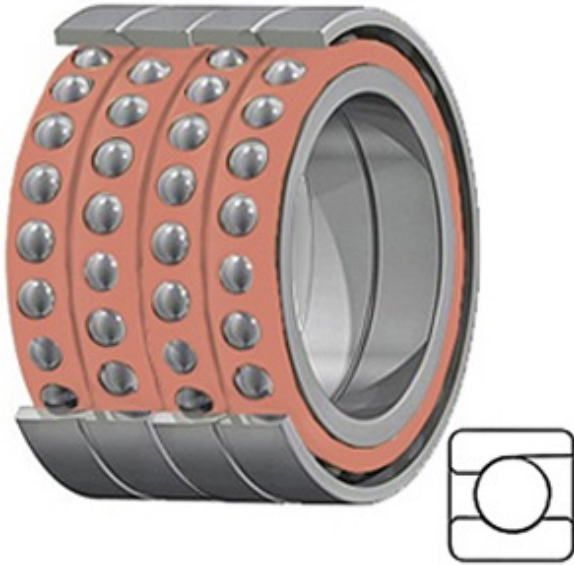




SNR BEARINGS ITÁLIA S.P.A.



MM9308WI 2H QUH Bearing 2D drawings and 3D CAD models

0.939 Inch | 23.851 Millimeter x 2.441 Inch |
62.001 Millimeter x 2.5 Inch | 63.5 Millimeter
TIMKEN MM9308WI 2H QUH Precision Ball
Bearings

Bearing No. MM9308WI 2H QUH

Category	Precision Ball Bearings
Inventory	0.0
Manufacturer Name	TIMKEN
Minimum Buy Quantity	N/A
Weight	0.799
EAN	0087796073517
Product Group	B04270
Enclosure	Open
Precision Class	ABEC 7 ISO P4
Material - Ball	Steel
Number of Bearings	4 (1 Quadruplex Set)
Contact Angle	60 Degree
Preload	Heavy
Raceway Style	1 Rib Outer Ring
Cage Material	Phenolic
Rolling Element	Ball Bearing
Mounting Arrangement	Quadruplex-Universal
Flush Ground	Yes
Inch - Metric	Inch
Other Features	Single Row Angular Contact Ball Screw Support Super Precision High Capacity
Long Description	0.939" Bore; 2.441" Outside Diameter; 2-1/2" Width;



SNR BEARINGS ITÁLIA S.P.A.

	Open Enclosure; ABEC 7 ISO P4 Precision; Steel Ball Material; 4 (1 Quadruplex Set) Bearings; 60 Degree Contact Angle; Phenolic Cage
Category	Precision Ball Bearings
UNSPSC	31171531
Harmonized Tariff Code	8482.10.50.28
Noun	Bearing
Keyword String	Angular Contact Ball
Manufacturer URL	http://www.timken.com
Manufacturer Item Number	MM9308WI2HQUH
Weight / LBS	1.74
B	2.5 Inch 63.5 Millimeter
d	0.939 Inch 23.851 Millimeter
D	2.441 Inch 62.001 Millimeter